

COURTYARD HOMES AT LIMESTONE CREEK

REPLAT OF A PORTION OF LOT 33, LOXAHATCHEE GARDEN FARMS, PLAT BOOK 2, PAGE 68, PUBLIC RECORDS OF PALM BEACH COUNTY, FLORIDA AND A REPLAT OF LOTS 251 THRU 254, ABYSSINNA PARK, UNRECORDED ASSESSOR'S MAP NUMBER 22 LYING IN SECTION 3, TOWNSHIP 41 SOUTH, RANGE 42 EAST, PALM BEACH COUNTY, FLORIDA

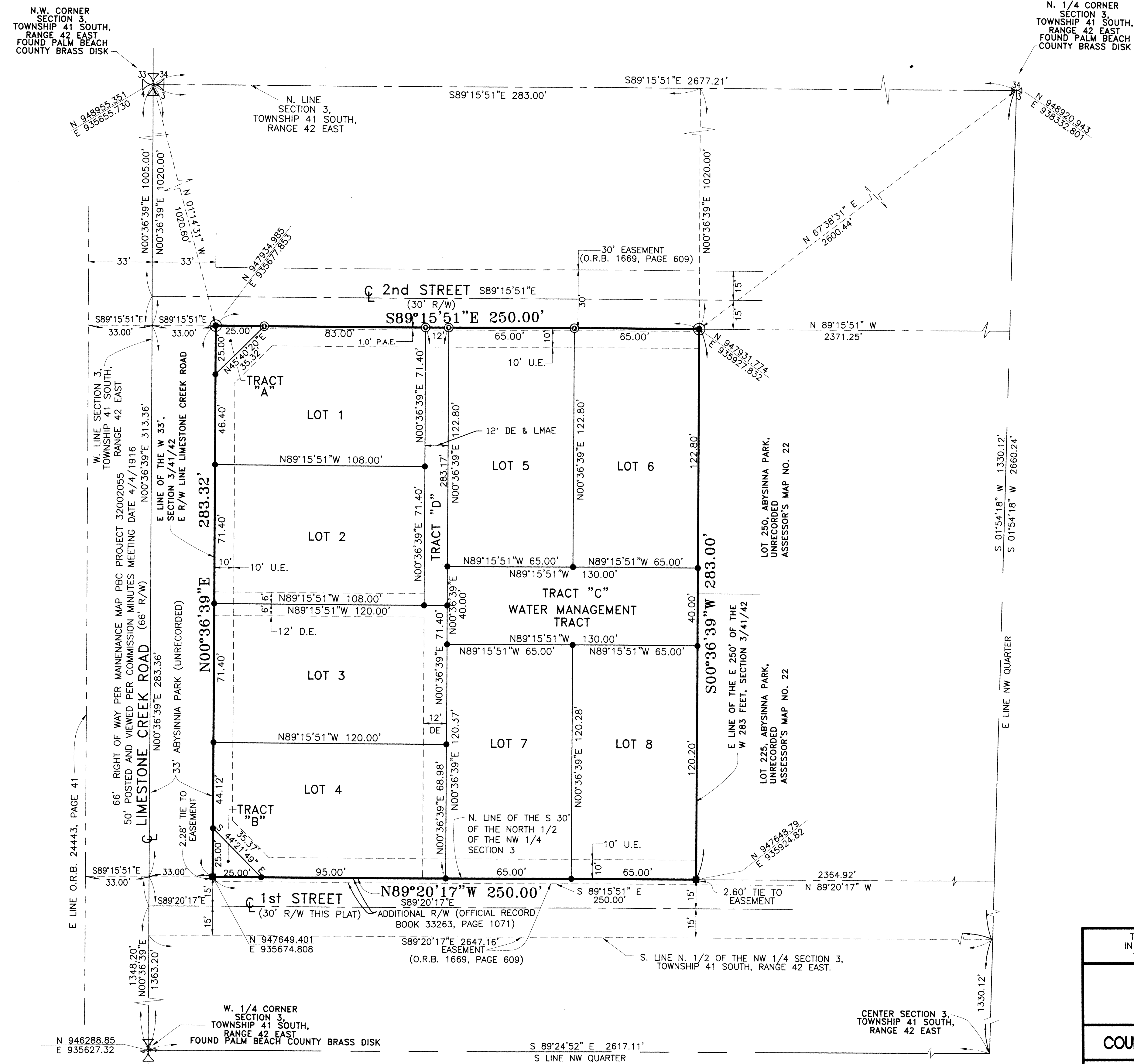
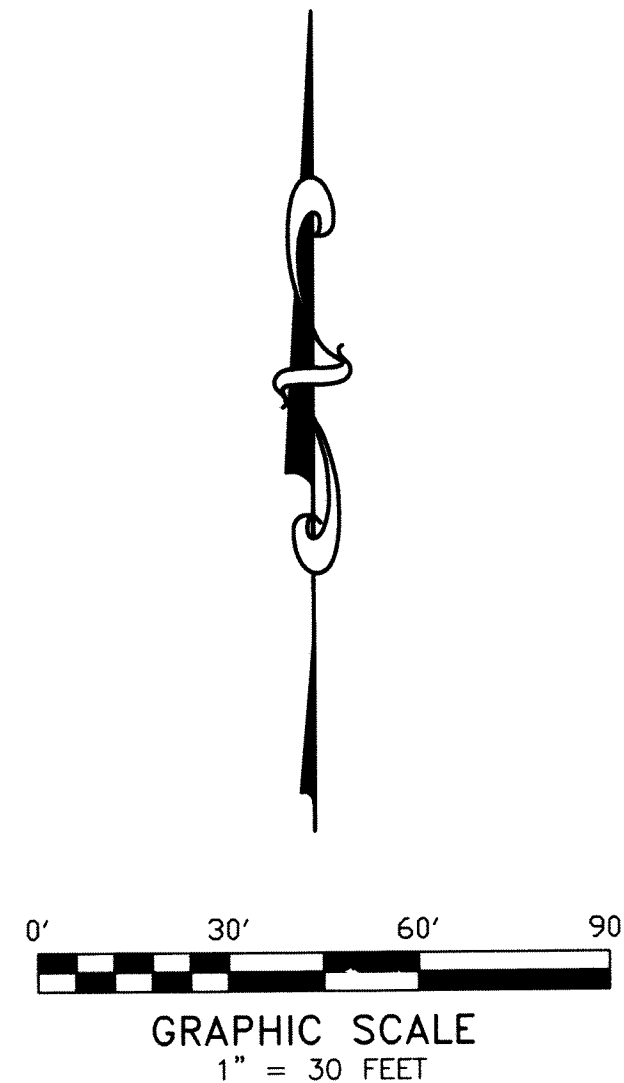
STATE OF FLORIDA
COUNTY OF PALM BEACH) 188

THIS PLAT WAS FILED FOR RECORD
AT _____ M. THIS
DAY OF _____ 2022
AND DULY RECORDED IN PLAT BOOK
ON PAGES _____
THRU _____

JOSEPH ABRUZZO
CLERK OF THE CIRCUIT COURT
AND COMPTROLLER OF PALM BEACH COUNTY

BY: _____ D.C.

SHEET 2 OF 2



- LEGEND:**
- = SET 5/8" IRON ROD/PLASTIC CAP STAMPED "MIXON L.S. 3335"
 - ⊙ = SET NAIL/BRASS DISK STAMPED "MIXON L.S. 3335"
 - = PERMANENT REFERENCE MONUMENT (PRM) SET 4"x4" CONCRETE MONUMENT STAMPED "PRM - LS 3335"
 - ⊙ = PERMANENT REFERENCE MONUMENT (PRM) SET NAIL/DISC STAMPED "PRM - LS 3335"
 - D.E. = DRAINAGE EASEMENT
 - O.R.B. = OFFICIAL RECORD BOOK
 - U.E. = UTILITY EASEMENT
 - R/W = RIGHT OF WAY
 - D.U. = DWELLING UNIT

THIS INSTRUMENT WAS PREPARED BY RICHARD A. MIXON, IN AND FOR THE OFFICE OF MIXON LAND SURVEYING, INC. 12450 NE 26TH AVENUE OKEECHOBEE FLORIDA 34972.

MIXON LAND SURVEYING, INC.
12450 NE 26TH AVENUE
OKEECHOBEE FLORIDA 34972
772-260-5302
CERTIFICATE NO. LB 4199

COURTYARD HOMES AT LIMESTONE CREEK

JOB NO. 03-329 CADD FILE 03-329 DATE 12/2019 SHEET 2 OF 2